



# PRODUCTS & SERVICES

2018-2019



# PRECISION TANK

## Liquid Storage Solutions

Welcome to the new Precision Tank. Building on the heritage of Precision Tank & Equipment and A&B Welding, Precision Tank is a leading organization that offers innovative liquid storage solutions.

Together, we share a vision of providing a full range of premier stainless steel tanks, mild steel tanks, fiberglass tanks and construction services.

Innovate. Fabricate.

# TABLE OF CONTENTS

## SHOP BUILT TANKS & APPLICATORS

Fiberglass Tanks. . . . . 4

Stainless Steel Tanks. . . . . 6

*Applicator and Small Nurse Tanks* . . . . . 6

*Large Nurse Tanks* . . . . . 7

*Double Conical Tanks* . . . . . 7

*Bulk Chemical Tanks* . . . . . 8

*Chemical Weigh Tanks* . . . . . 8

*Bulk N-Serve Tanks* . . . . . 9

*Mini-Bulk-N Serve Tanks* . . . . . 9

Mild Steel Tanks. . . . . 10

*Flat Bottom Vertical Storage Tanks* . . . . . 10

*Cone Bottom Vertical Storage Tanks* . . . . . 11

Applicators and Equipment . . . . . 12

*Precision Flotation Chassis* . . . . . 12

*Nurse Unit* . . . . . 13

*Pacesetter XL Dry Unit* . . . . . 14

*Pacesetter XL Liquid Unit* . . . . . 15

*Custom Built Applicators* . . . . . 16

*Municipal/Fire District Equipment* . . . . . 17

Parts, Accessories and Repair . . . . . 17

## LIQUID STORAGE CONSTRUCTION

Piping and Plumbing . . . . . 20

Field Erected Tanks . . . . . 21

Design and Budget . . . . . 22

Project Management . . . . . 22

Buildings . . . . . 22

Secondary Containment . . . . . 23

Automation Systems . . . . . 24

Repair and Inspection . . . . . 24

Locations. . . . . 25





# SHOP BUILT TANKS & APPLICATORS

## Premier Fiberglass Tanks, Stainless Steel Tanks, Mild Steel Tanks, Applicators and Parts

Precision Tank is now into its sixth decade of serving agribusiness and industry. Our company's tradition of excellence has been our guiding force, and will continue to be the standard by which we judge our products, our people and our service.

Precision Tank, Inc. headquartered in Virginia, IL, fabricates a full range of stock and custom stainless steel tanks, mild steel tanks, fiberglass tanks, applicators and equipment for agriculture, industrial and municipal markets.

# FIBERGLASS TANKS

With a unique manufacturing process and high quality materials, Precision Tank fiberglass is unmatched in strength and tank life.

## Features and Options

Fiberglass tanks are designed to eliminate the effects of fertilizer and chemical corrosion, providing long-term performance. All Precision Tank fiberglass tanks come with a 3-year warranty.

- Isophthalic polyester resin is used throughout our standard tanks. Vinyl ester resin is also offered for harsh environmental storage installations, and likewise is used throughout all tank layers.
- The final gel coat exterior has the best resistance to ultraviolet light, and will last the entire tank life – no more repainting like mild steel tanks.
- 24" manhole and cover is standard on all tanks.
- 3", 4" or 6" outlets are available, depending on tank size and customer requirements.
- Fiberglass tanks are 60% lighter and have a higher strength-to-weight ratio than steel tanks.
- Due to increased longevity and low maintenance, fiberglass tanks are more cost effective than steel tanks.
- Internal slope bottom tanks available.

### Available Sizes

12,000 gallons

15,000 gallons

20,000 gallons

25,000 gallons

30,000 gallons

*Internal slope bottoms available on all tank sizes*

### Precision Tank Advantages

- On-site delivery included
- Helical winding for added strength



Helical Winding



Custom Tops/Bottoms

## Layers of Quality

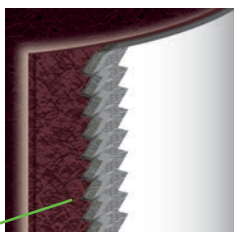
Fiberglass tanks are constructed of four layers to provide long lasting durability and corrosion resistance from the innermost veil to the outer UV coating.



Dome tops add to the overall strength of the tank.

24" manholes and covers are standard on all tanks.

3", 4" and 6" outlets are available, depending on customer requirements

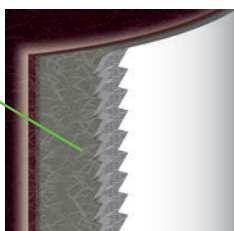


### 1 | VEIL

90% Resin

10% Veil

The blend of resin and veil provide the first line of defense against chemical migration in the inner section of the corrosion layer.

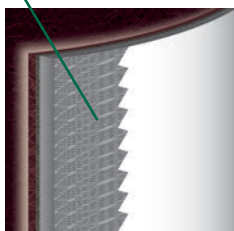


### 2 | CHOP

70% Resin

30% Glass

A combination of resin and glass create the outer section of the corrosion layer. Tanks are manufactured with high quality raw materials at industry standards for superior reliability.

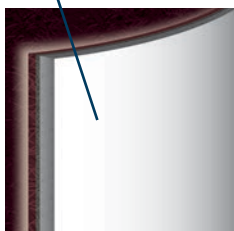


### 3 | STRUCTURAL

30% Resin

70% Glass

**CNC controls are used to produce a unique, state-of-the-art helical winding pattern for superior strength.** Isophthalic resin or vinyl ester resin is included in the structural layer to increase resistance to chemical migration for superior tank life.



### 4 | UV GEL COATING

100% UV Resistant Gel Coating

Protects the tank from UV rays and weather. Gel coat is mixed by the manufacturer for superior quality.



## STAINLESS STEEL

# APPLICATOR AND SMALL NURSE TANKS

Constructed of type 304 stainless steel with #4 finish, these tanks are designed and constructed to withstand the rigors of open field use. Optional equipment, such as spargers, skids, etc. are available to design a custom configuration.

Tanks comes standard with dished heads, 16" manhole with 10" quick opening, 2" stainless steel vent opening, 1-1/2" sight gauge with capacity chart and polished weld seams.

### 430 to 540 Gallon Capacity

Model	Capacity	Dimensions	Shell
SS-43-A	430 gal	44" x 60" x 74"	14 ga
SS-52-A	520 gal	44" x 72" x 86"	14 ga
SS-54-A	540 gal	48" x 60" x 76"	14 ga

**NOTE:** Free pickup for stainless steel nurse and chemical tanks (up to 96" diameter) is available at our Midwest production locations of Virginia, IL; Humboldt, IA; and Ligonier, IN.

#### Optional Equipment

- 48" V Sump with 2" Outlet
- Tank Baffle
- 2" S/S Removable Sparger
- 1-1/2" S/S Rinse Sparger
- S/S Weld-on Skid

S/S – Stainless Steel

### 1,000 to 1,800 Gallon Capacity

Model	Capacity	Dimensions	Baffles	Shell
SS-100-U	1,000 gal	48" x 120" x 135"	1	14 ga
SS-128-U	1,280 gal	54" x 120" x 137"	1	12 ga
SS-160-U	1,600 gal	60" x 120" x 137"	1	12 ga
SS-180-U	1,800 gal	60" x 144" x 161"	2	12 ga



#### Optional Equipment

- V Sump 96" or 120" with 3" Outlet
- 10 ga or 3/16" S/S Weld-on Skid
- 2" S/S Removable Sparger
- S/S Ladder
- Mounting Kit with Brackets/Springs
- S/S Flush Tanks – 60 or 100 gal
- 1-1/2" Rinse Sparger
- 96" S/S Catwalk/Fenders
- Safety Platform
- 4" Outlet Upgrades



# LARGE NURSE TANKS

Model	Capacity	Dimensions	Baffles	Shell
SS-200-U	2,000 gal	60" x 156" x 173"	2	12 ga
SS-245-U	2,450 gal	66" x 156" x 176"	2	12 ga
SS-315-U	3,150 gal	72" x 168" x 190"	2	12 ga
SS-330-U	3,300 gal	72" x 180" x 202"	2	12 ga
SS-350-U	3,500 gal	72" x 192" x 214"	2	12 ga
SS-370-U	3,700 gal	72" x 204" x 226"	3	12 ga
SS-420-U	4,200 gal	72" x 228" x 250"	3	12 ga



4,200 Gallon  
2 Compartments with Flush Tank

Available with 1 or 2 Compartments

## Optional Equipment

- 3/16" S/S Weld-on Skid
- 144" V Sump with 3" Outlet
- 2" S/S Removable Sparger
- 120" S/S Catwalk/Fenders
- Mounting Kit with Brackets/Springs
- 4" Outlet Upgrade
- S/S Ladder
- Additional Manways
- S/S Flush Tanks – 60 or 100 gal
- 1-1/2" S/S Rinse Sparger

# DOUBLE CONICAL TANKS

Double conical tanks are equipped with the following fittings and assembly — 1-1/2" sight gauge fittings on each end; two sight gauge strips; 2" stainless steel sparger tube installed with dresser couplers; a 3" outlet; 2" vent opening; two lifting lugs; stainless steel pipe ladder; a 16" all-stainless manway with flip-top 10" fill. Skids are welded to the shell, the ends boxed with reinforcing bands between head and skid.

## 3,200 Gallon Model DC-3200 – Type 304 Stainless Steel – Dimensions

A	B	C	D	E	Shell	Head
66"	84"	180"	204"	76"	12 ga	12 ga



Available with 1 or 2 Compartments

## Optional Equipment

- 3/16" S/S skid
- 1/2 V Sump
- 4" Outlet
- Safety Platform
- S/S Flush Tanks – 60 or 100 gal
- Additional S/S Ladder
- 1-1/2" S/S Rinse Sparger
- S/S Catwalk/Fenders

# BULK CHEMICAL TANKS

Vertical storage tanks are available in either cone bottom (CB) or flat bottom (FB). Chemical storage tanks are also available in horizontal (HZ) designs.

All chemical storage tanks are constructed of 304 alloy stainless steel with a #4 finish or 316 alloy with a 2B finish, and manufactured with openings and fittings as specified by the customer. Included is a 2" stainless outlet pipe to the side.

If larger stainless steel storage is required, Precision Tank can custom build stainless steel tanks up to 30,000 gallons capacity.

Model	Capacity	Dimensions	Shell
CB-1100	1,100 gal	58" x 96" x 120"	14 ga
CB-1600	1,600 gal	70" x 96" x 120"	14 ga
CB-2200	2,200 gal	82" x 96" x 120"	14 ga
CB-2400	2,400 gal	70" x 144" x 168"	14 ga
CB-2940	2,940 gal	94" x 96" x 120"	14 ga
CB-3000	3,000 gal	70" x 180" x 204"	14 ga
CB-3650	3,650 gal	94" x 120" x 144"	12 ga
CB-4300	4,300 gal	94" x 144" x 168"	12 ga
CB-5100	5,100 gal	94" x 168" x 192"	12 ga
CB-6100	6,100 gal	94" x 204" x 228"	12 ga
CB-8000	8,000 gal	94" x 264" x 288"	10 ga
CB-10,000	10,000 gal	142" x 144" x 168"	10 ga
CB-12,000	12,000 gal	142" x 180" x 204"	10 ga

## Standard Equipment

- 2" S/S Outlet Pipe to Side of Tank
- 16" S/S Hinged Manway
- 2" S/S Vent Outlet
- S/S Legs with Footpads



# CHEMICAL WEIGH TANKS

Precision Tank's chemical weigh tanks are made of stainless steel, with an optional stainless steel water rinse ring. The weigh tank's physical size adapts to a platform scale, allowing you to capture weights of solutions without making another major equipment investment. The low profile facilitates adding crop protection by jugs, if desired. Our smooth cone bottom design aids in clean-out. Weigh tanks can be outfitted with water flush and air blow out optional equipment. These tanks can be modified to work with common agronomy software packages. Custom sizes and 1/2 hinged lids are also available.

Model	Capacity	Dimensions
CWT-60	60 gal	36" x 11" x 33"
CWT-80	80 gal	36" x 16" x 38"
CWT-120	120 gal	42" x 16" x 38"
CWT-150	150 gal	42" x 22" x 38"
CWT-200	200 gal	48" x 24" x 38"
CWT-250	250 gal	48" x 30" x 44"



# N-SERVE® STORAGE TANKS

Precision Tank's Vertical Bulk N-Serve Tanks are built to UL-142 specifications, and carry the Underwriters Laboratories Label. They are flat bottom design, fabricated of type 304 stainless steel material with a #4 finish and are welded internally and externally.

## Stainless Steel Vertical Flat Bottom Tanks

Model	Capacity	Dimensions
NS-FB 24	2,400 gal	70" x 144"
NS-FB 30	3,000 gal	70" x 180"
NS-FB 43	4,300 gal	94" x 144"
NS-FB 50	5,000 gal	94" x 168"
NS-FB 61	6,100 gal	94" x 204"
NS-FB 100	10,000 gal	132" x 168"

### Included Fittings

- (3) 2"S/S Flanged Outlets
- (1) 2" S/S Coupling in Top
- (1) 20" S/S Manway in Top
- Vent to UL-142 Specifications
- (2) S/S Lift Lugs

# MINI-BULK N-SERVE® TANKS

Precision Tank's Mini-Bulk N-Serve Tanks are fabricated of #4 finish 304 stainless steel, meet UN Packing Group II, DOT 49 CFR specifications, and are EPA compliant.

These round tanks are built with dished heads in the top and bottom for strength. They are rated for 11 pounds per gallon material.

Standard specifications include a 16" stainless steel manway with 10" flip top opening, 2" pressure vacuum vent, 2" bottom outlet with valve, dry break and a one way check valve. The bottom outlet is centered in the dished head for maximum drainage and easy cleaning.

Mini-Bulk N-Serve tanks are welded internally and externally. They are stackable and have forklift slots on the bottom and lifting slots in the top rim.

## Type 304 Stainless Steel

Model	Capacity	Dimensions
NS-MB 200	200 gal	44" x 53"
NS-MB 250	250 gal	44" x 60"
NS-MB 300	300 gal	44" x 68"



## MILD STEEL

# FLAT BOTTOM VERTICAL STORAGE TANKS

Vertical storage tanks are fabricated of A36 low carbon mild steel. We always use this grade of steel while some competitors use cheaper grades. Tanks are available in either cone bottom (CB) or flat bottom (FB) and are welded internally and externally for maximum resistance to corrosion and weather.

Precision Tank can arrange delivery of your vertical storage tanks upon request. Precision Tank's unique delivery trailer is capable of erecting the tanks on location at your job site.

### 6,000 to 30,000 Gallon Capacity

Model	Capacity	Diameter	Height	Bottom	Shell	Top
SFB-6	6,000 gal	8'	16'	1/4"	3/16"	3/16"
SFB-10	10,000 gal	11'	14'	1/4"	3/16"	3/16"
SFB-12	12,000 gal	11'	17'	1/4"	3/16"	3/16"
SFB-15	15,000 gal	12'	18'	1/4"	3/16"	3/16"
SFB-20	20,000 gal	12'	24'	1/4"	3/16"	3/16"
SFB-25*	25,000 gal	12'	29'	1/4"	1/4"	3/16"
SFB-30**	30,000 gal	12'	35'	1/4"	1/4"	3/16"
SFB-30Q***	30,000 gal	12'	35'	1/4"	All 1/4"	3/16"



#### Included Fittings

- (1) 3" Type 304 S/S Outlet
- (1) 18" Bolted Cover Manhole in Shell
- 1" Sight Gauge Openings
- (1) 3" Vent Opening in Top Center
- Painted Rust-Resisting Primer

#### Optional Equipment

- Caged Ladder
- Sight Gauge Kit

\* First shell course is 1/4" and the balance of the shell courses are 3/16".

\*\* First two shell courses are 1/4" and the balance of the shell courses are 3/16".

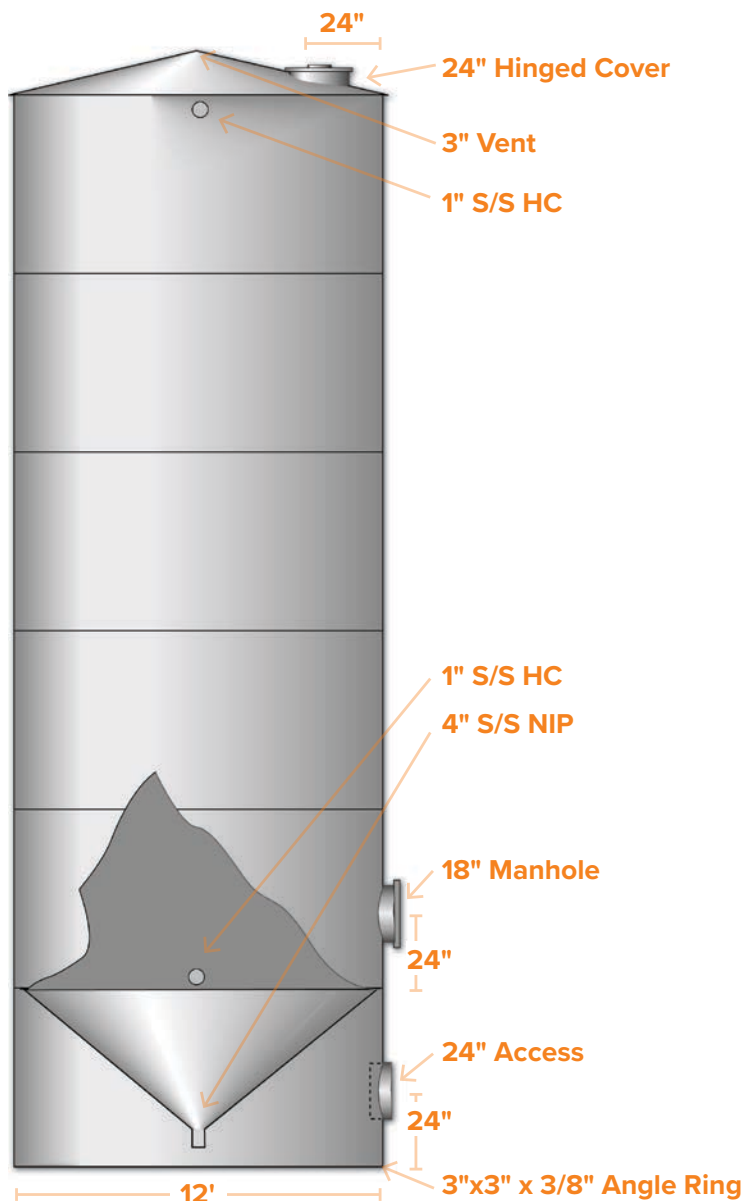
\*\*\* All shell courses are 1/4".



# CONE BOTTOM VERTICAL STORAGE TANKS

11,650 to 25,200 Gallon Capacity

Capacity	Diameter	Height	Cone Bottom	Shell	Skirt
11,650 gal	12'	19'	1/4"	3/16"	1/4"
15,800 gal	12'	24'	1/4"	3/16"	1/4"
20,100 gal	12'	29'	1/4"	1/4"	1/4"
25,200 gal	12'	35'	1/4"	1/4"	1/4"



## Included Fittings

- (1) 3" Type 304 S/S Outlet
- (1) 18" Bolted Cover Manhole in Shell
- 1" Sight Gauge Openings
- (1) 3" Vent Opening in Top Center
- 24" Access Opening in Skirt
- Painted Rust-Resisting Primer

## Optional Equipment

- Caged Ladder
- Sight Gauge Kit

\* The first course of shell is constructed of 1/4" steel for strength, the balance of the shell courses use 3/16" steel.



## APPLICATORS AND EQUIPMENT

# PRECISION FLOTATION CHASSIS

When you purchase a Precision Flotation Chassis you are buying a piece of equipment that has been designed and built by personnel with over 40 years of experience. This experience and quality has led to numerous satisfied customers over the years. You can choose from Precision Tank's stock chassis specifications to meet your full-float or semi-float requirements. (Specifications as listed below make the Precision Flotation Chassis)

### Full-Float or Semi-Float



### Standard Specifications

- Kenworth Chassis
- White or Red in Color
- Diesel Engine: 330 HP
- Transmission: Automatic
- Heavy Duty Front Axle
- Dual Steering Gear Box
- Heavy Duty Rear Axles
- Heavy Duty Frame
- Air Brakes
- 13 Cu. Ft. Air Compressor
- 100 Gal Fuel Capacity
- Heavy Duty Alternator
- Front Tow Hooks
- AM/FM Radio
- Air-Ride Cab
- Air-Ride Drivers Seat
- Single Passenger Seat
- Electronic Throttle
- Circuit Breakers
- Air Conditioning
- Heavy Duty Batteries
- Vertical Exhaust
- Dry Element Air Cleaner
- Power Steering
- Air Dryer
- Fiberglass Tilt Hood Wide
- Fiberglass Fenders
- Stainless Steel Mirrors
- Engine Hour Meter
- Tachometer
- Tinted Glass
- Cab Handles
- Air Horns
- Fire Extinguisher
- Gauge Package
- Flotation Tires

# NURSE UNIT

Applicators are designed to apply fertilizer and chemicals in the field. Wasted time, reduced profits, and increased wear and tear result when applicators are on the road hauling product or returning to the plant to reload. Precision Tank can assist in designing and manufacturing a nurse unit for you from the ground up, with payload to meet your needs.

## Keep Your Applicators in the Field Making Money



### Options

- Single Compartment Tank
- Multiple Compartment Tank
- Stainless Steel Tank Skid
- Stainless Steel Catwalks
- Stainless Steel Plumbing
- Flush Tanks
- Your Choice of Plumbing Size
- Your Choice of Pump Drive
- Your Choice of Pump Size
- Tank Only
- Tank Mounted on Trailer
- Tank Mounted on Chassis

**This wide array of choices allows you to design a nurse unit to your exact specifications!**

*Call or email and let us design and manufacture a Precision Tank nurse unit for you.*



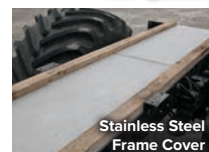
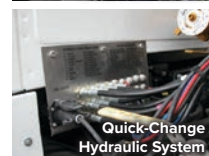
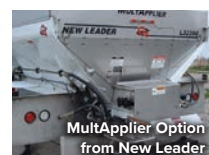
# PACESETTER XL DRY UNIT

Rugged, easy to operate and accurate, the Pacesetter XL granular option offers unsurpassed efficiency and convenience. It features the New Leader G4 series dry spreader – in our opinion, the best in the industry. The L4000 series spreader rates range from 75 pounds of fertilizer per acre to over six tons of lime per acre.

The 14-foot models hold 300 cu. ft. of material struck, and more when heaped. Thick 10-gauge steel with an inverted channel at all top edges provides rigidity. Buttressed sides add strength.

Hydraulics, PTO-driven from the transmission, supply power to both the conveyor and the independently-driven spinners. A high-efficiency hydraulic system contributes to cool running and long life.

Dished spinner design broadcasts material further, wider and more consistently. Predetermined settings for fertilizer, urea, lime and wet lime simplify spread pattern testing and daily application.



## Features & Optional Equipment

- Kenworth Chassis 330 HP Engine
- Allison Automatic Transmission with 2-Speed Drive Line
- Heavy Duty Rear Axle
- 13' and 14' New Leader L4000G4 Series Dry Boxes
- Lime and Fertilizer Bed
- 409 or 304 Stainless Steel Beds
- 30" #4 Belt over Chain
- Dual 24" Rear Spinners
- Up to 90' Spread Widths
- Raven, Other Controls Available
- Other Models Available Include: L4000G4, L2000G4, L3020G4, L5034G4, L45000G5, and L5000G5
- The MultApplier Attachment can be Added to the L4000G4 and L3020G4 Models

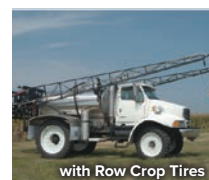


# PACESETTER XL LIQUID UNIT

Pacesetter XL will add versatility to your application fleet by allowing you to use just one unit for all your fall, spring and post liquid fertilizer and chemical application work.

You get "two" applicators for the price of "one." A full flotation unit when equipped with the flotation tire package, and a row crop unit when fitted with the high-clearance, narrow tire package. Converting the Pacesetter XL from a row crop to full flotation applicator is just a matter of changing tires.

The Pacesetter XL also offers less compaction in the field when compared with many other post applicators with equal payloads.



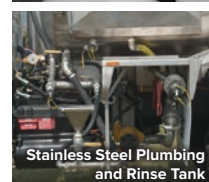
with Row Crop Tires



Foam Tank



Cab Console



Stainless Steel Plumbing  
and Rinse Tank

## Features & Optional Equipment

- Kenworth Chassis 330 HP Engine
- Allison Automatic World Transmission
- Heavy Duty Rear Axle
- Air Ride Cab
- Raised Front Axle
- Stainless Steel Tanks, from 1,280 to 2,000 Gallons
- Boom Widths from 60' - 90' Adjustable Boom Spray Heights
- Raven, Other Controls Available
- Stainless Steel Plumbing
- Various Nozzle Spacing Available
- High-Capacity Pumping System
- Hydraulic Pump Drive System

# CUSTOM BUILT APPLICATORS

## Liquid or Dry

Precision Tank has been building and designing fertilizer application equipment for over 50 years. While our line of Precision Tank dry and liquid applicators offers our customers a wide range of choices, sometimes you need something unique. Our team works with you to design and manufacture a custom-built applicator to meet your specific needs.

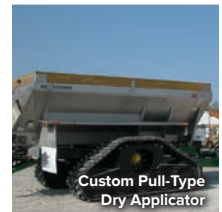
No project is too large or too small. We will work with you on the applicator modifications you want to make to your standard unit and provide you with a written proposal. If we're starting with a clean sheet of paper and designing an entire unit to fill your needs, we will provide a completed price estimate, with final billing to be done on a time and material basis.



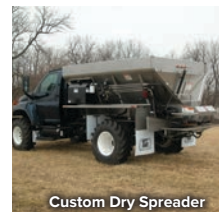
Custom Miller Applicator



Custom Pull-Type  
Liquid Applicator



Custom Pull-Type  
Dry Applicator



Custom Dry Spreader

### Range of Services

- We build application equipment systems on other manufacturers' chassis'
- We assist customers with chassis specifications for special-sized equipment
- We assist customers with plumbing design and configuration to meet capacity, durability and pricing needs
- We assist customers with product pump selection to fill a specific job requirement
- We configure boom plumbing systems to meet applicator requirements
- We design and build applicator tanks to fill specific customer needs
- We assist customers with the design and construction of multiple-use equipment

**Call our Athens location at 800 811 7814, so we can help you with your custom-built applicator project.**

# MUNICIPAL/FIRE DISTRICT EQUIPMENT

## Water Tankers and Brush Trucks

Precision Tank can design and manufacture custom water tankers and brush trucks to meet the specific needs of your rural fire district.

Water tankers from Precision Tank feature tank capacities from 1,000 to 3,700 gallons. Tank designs are available in round or elliptical configurations, with full baffles and sight gauge openings. You can choose from T304 #4 stainless steel or mild steel construction.

Brush trucks, with 4-wheel drive units designed to reach remote fires, feature tank capacities from 200 to 500 gallons. Tank designs are available in stainless steel or aluminum. The rest of the unit is equipped with the pump, winch, and hose system that meets your needs for off-road fires in farm fields, pastures or timberland.

Specify the requirements you want on a chassis from Precision Tank, or we can retrofit your current fire protection district fleet.



## PARTS, ACCESSORIES AND REPAIR

Precision Tank stocks a complete line of fertilizer related accessories, replacement and repair parts. The Precision Tank Parts Catalog contains listings for nearly 9,000 different parts held in our inventory, ready for immediate shipment. We carry all parts for Precision Tank's line of liquid applicators, tanks, mixers, and New Leader dry beds. Precision Tank also carries parts for almost every other applicator make and model and anhydrous ammonia.



Call our Toll Free "Parts Hotline" today and request a copy of our Parts Catalog.

**TOLL FREE "PARTS HOTLINE" – 1-800-811-7814**

Precision Tank makes it easy to order. Just call our Toll Free "Parts Hotline" and place your order. If your order is placed before 3:00 p.m. CST, we guarantee same-day shipment of items in stock!

Daily shipments can be made from either of our two Illinois locations via US Mail - UPS - Truck or Air. Overnite service available, if needed.

## SERVICE OR REPAIR

Precision Tank employs a staff of professionals that have the experience to service and repair our complete line of equipment. So when you need service or repair, put the Precision Tank Professionals to work for you!







# LIQUID STORAGE CONSTRUCTION

## The Leader in Design and Construction of Liquid Fertilizer Terminals

Precision Tank offers construction services for field erected tanks and liquid storage facilities.

Drawing on years of industry knowledge, we efficiently manage every aspect of the liquid storage project from planning and budgeting to construction and installation.

To ensure quality that meets our high standards and construction that stays on schedule, we have our own full time, trusted construction and plumbing crews.

# PIPING AND PLUMBING

Precision Tank has years of experience with fertilizer and chemical plumbing installations. We provide innovative designs and install plumbing for overhead structures, load-ins/load-outs, semi truck hookups, railcar hookups, barge hookups, mixers, blenders and various automation applications.

We use our own full time piping and plumbing crews to ensure the project is done right and done on time.

Installations have been constructed with carbon steel piping, stainless steel piping, and High Density Polyethylene (HDPE) piping and are designed to meet each customers unique requirements. We can assist you with any pumps, motors and fittings or connections to achieve the maximum input and output of any liquid applications that you would require.



## Services

- Stainless Steel Piping
- Carbon Steel Piping
- HDPE – High Density Polyethylene (Drisco)
- Pumps and Motors
- Fittings and Connections



**Piping and plumbing is completed by our own, experienced crews.**

# FIELD ERECTED TANKS

Precision Tank specializes in welded above ground steel tanks used for storage of liquid fertilizer, fuel, water, chemicals and other bulk commodities.

We offer field erected tanks from 100,000 gallons up to 3,000,000 gallons to meet our customers' needs. Our tanks meet or exceed API 650 Standards and have increased sidewall thickness, extra heavy rafter systems and in-tank recirculation (sparge) systems.

Along with building new tanks, we also clean, inspect, test and repair existing tanks.



## Services

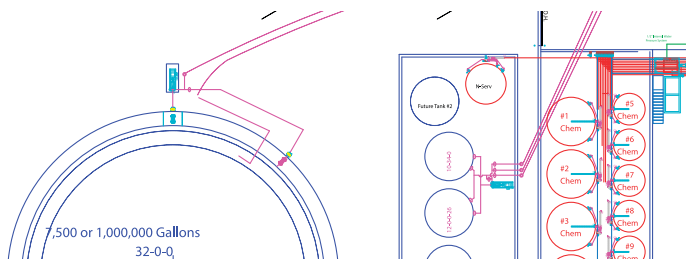
- Field Erected Tanks:  
100,000-3,000,000 Gallon
- Tank Liners
- Double Wall Tanks
- Tank Repairs
- Tank Retrofits



**Dedicated construction crews are on staff to ensure projects are done right and done on time.**

# DESIGN AND BUDGET

A successful project begins with good planning. Drawing on years of industry knowledge, we can craft an innovative design and balanced budget around your unique requirements.



## Services

- Facility Planning and Specs
- Process System Evaluation
- Piping and Pump System Design

# PROJECT MANAGEMENT

Constructing a liquid terminal is a complex project. Precision Tank can manage the process for you from start to finish, including subcontractors, if required, so everything is completed as planned while you focus on running your business.

# BUILDINGS

We can design and manage the construction of the buildings to house liquid storage terminals. With energy efficient, solid core panel options from EPS Structures or steel frame buildings from Behlen Buildings, the facility can be built to meet your specific needs.



## Solid Core Construction

Energy efficient, solid core panel construction from EPS Structures.

Structural Insulated Panels (SIPs) join high-performance rigid foam insulation to Oriented Strand Board (OSB) or plywood.

Precision Tank uses R-33 panels with fiberglass reinforced panel (FRP) interior facings.

## Steel Frame Buildings

We are a dealer for Behlen Buildings.



# SECONDARY CONTAINMENT

## Tank with Liner

A PVC membrane is placed inside the tank, which becomes the primary containment for the liquid; with the rigid tank being the secondary containment with mechanical leak detection ports. Installation is done utilizing OSHA Compliant trained crews and the latest methods of attachment and compression sealing of all inlets and outlets to your tank.

With proper care and maintenance, life expectancy can be 10-15+ years in 28% and 32% nitrogen service and 10-34-0 service.

This lining system is approved by most state departments of agriculture. Once scheduled, a lining system can normally be installed in less than seven days.

## Tank in a Tank

Recommended for areas with limited space, these space-saving tank packages have two floors and two walls, but share the same roof. You also do not have to monitor and pump rain water out of the containment area.

## Earthen Containment

One of the most common applications, dirt is excavated from the secondary containment location and used to build berm walls, forming a pooling area or containment dike. A liner system is then added to the containment floor and berm walls.

## Steel Containment

Similar to earthen containment, the area is excavated. After it is leveled and compacted, reinforcement posts and corrugated steel sheets are installed to create the containment area. Corrugated steel walls can be shaped to specific configurations to save valuable room. A liner system is installed to cover the floor and walls.



# AUTOMATION SYSTEMS

We can arrange the installation and configuration of automation systems through the supplier of your choice.

## Services

- Installation
- Configuration



# REPAIR AND INSPECTION

## Inspection and Testing

After cleaning, a visual inspection is done of the tank. Any areas of concern are documented and supplied to the customer with our recommendations for repair. If a more thorough inspection is required, vacuum box, leak penetrant, and radiographic testing are available.

## Repair

Repairs are made to meet or exceed API 653 Standards. Examples of common repairs are pitting areas, worn welds, worn steel and corrosive areas.

If there are areas of concern in the tank floor or sidewall, depending on the condition, a coating may be applied instead of replacing it. The area is sandblasted and thoroughly cleaned, the coating is then installed over the entire tank floor and a portion of the sidewall or the entire sidewall depending on customer preference.

## Services

- Tank Cleaning
- Regulatory Compliance
- Industry Standards Compliance
- Storage Tank Inspections
- Piping Inspections
- Lining and Coating Inspections

# LOCATIONS

## Precision Tank, Inc.

### Virginia, IL

#### Headquarters and Tank Sales

PO Box 20  
Virginia, IL 62691  
217 452 7228  
800 258 4197

### Athens, IL

#### Applicators and Parts

25203 Quarry Avenue  
Athens, IL 62613  
217 636 7023  
800 811 7814

### Ligonier, IN

#### Tank Manufacturing

215 Heckner Drive  
Ligonier, IN 46767

### Humboldt, IA

#### Tank Manufacturing

2280 16th Ave North  
Humboldt, IA 50548

## Precision Liquid Construction, LLC

### Thompson, IA

#### Liquid Construction Services

PO Box 257  
Thompson, IA 50478  
641 584 2900

[www.precisiontank.com](http://www.precisiontank.com)

**TOLL FREE "PARTS HOTLINE" – 1 800 811 7814**



Humboldt, IA Facility

## **Precision Tank, Inc.**

### **Virginia, IL/Headquarters**

PO Box 20  
Virginia, IL 62691  
217 452 7228  
800 258 4197

### **Athens, IL**

25203 Quarry Avenue  
Athens, IL 62613  
217 636 7023  
800 811 7814

### **Ligonier, IN**

215 Heckner Drive  
Ligonier, IN 46767

### **Humboldt, IA**

2280 16th Ave North  
Humboldt, IA 50548

## **Precision Liquid Construction, LLC**

### **Thompson, IA**

PO Box 257  
Thompson, IA 50478  
641 584 2900

[precisiontank.com](http://precisiontank.com)

